

# Case study



06/10/15

**For immediate release**

## **The Schöck Isokorb. An effective alternative to wrapped parapets.**

Located near Highgate in North London, the Chester Balmore project consists of three elegant brick-clad blocks, housing a contemporary collection of 53 super-insulated one, two and three-bedroom flats, all set around a landscaped courtyard. The development is designed to achieve Code for Sustainable Homes Level 4 and the high levels of insulation employ good use of solar and internal heat gains, plus excellent air tightness and minimal thermal bridges. The virtually airtight envelope is constructed using reinforced concrete and blockwork and has a 250mm wall cavity filled with EPS, along with a special resin to hold the material in position. Including the cavity, the walls are half a metre thick and the windows are all triple glazed. It is claimed that the air tightness on the Chester Balmore development is around twenty times better than that required by Building Regulations.

Preventing thermal bridging along the parapets was a critical consideration for such a high performance development, because as with balconies, parapets can allow conductive materials to transfer energy through the thermal barrier. Conventionally, in the majority of cases, the method of insulating parapets and parapet walls is to wrap the perimeter of the wall with an insulation barrier. However, the Schöck Isokorb type A offers a cost-effective and more thermally efficient alternative. Its 60mm insulation thickness results in low psi-values and therefore significantly reduces heat loss – and there is no wrapping required. It offers a more sophisticated construction opportunity for greater freedom of design and offers flexible distance between elements according to load requirements. An added benefit being there is no risk of any additional thermal

bridging through balustrade fixings. Other key factors are durability and water impermeability. The Isokorb type A solution does not require maintenance and there is no risk of expensive restoration due to waterproofing problems. Whereas wrapped components can be likened to an insulated flat roof, with many of the associated problems. They are prone to damage and almost inevitable repair and maintenance outlay, particularly where railings or covers pierce the insulating layer. With thermally separated parapets, railings and covers can be attached directly into the concrete. The Isokorb type A provides BBA Certification and LABC Registration and meets full compliance with the relevant UK building regulations. In addition, there is also compliance with the Government Standard Assessment Procedure, SAP 2009, concerning CO<sub>2</sub> emissions from buildings and respectively heat losses through non-repeating thermal bridges.

***For your free copy of the comprehensive 236 page 'Technical Guide' and / or a copy of the new Schöck 'Thermal Bridging Guide' contact the company on: 01865 290 890 go to [www.schoeck.co.uk](http://www.schoeck.co.uk); or email: [design@schoeck.co.uk](mailto:design@schoeck.co.uk)***

- Ends -

**Press Contact for Schöck Ltd:**

Michael Revans Communications  
47 Barn Rise, Wembley Park,  
HA9 9NH

tel: 020 8904 9733

e: [michael.revans1@btinternet.com](mailto:michael.revans1@btinternet.com)

**The design and construction team includes:**

Architect:	Rick Mather Architects
Main contractor:	Willmott Dixon Housing
Working drawings:	Architype
Sustainability and M&E consultant:	Mott MacDonald
Concrete frame:	J Reddington

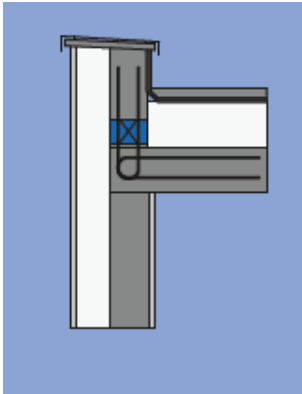
## Notes to the editor

### A leading European supplier

Schöck has grown to become Europe's leading supplier of innovative structural load bearing insulation products. The main product is the Schöck Isokorb – a thermal break for various types of cantilever constructions in new buildings and for renovation. Its headquarters are at Baden-Baden in southern Germany and there are subsidiary companies in Great Britain, France, Austria, Switzerland, Italy the Netherlands, Belgium, Poland, Hungary, Russia, Japan, Canada and the USA. Sales teams and partners operate in many other European countries and also Australia and South Korea. Schöck is committed to providing the highest level of technical back up and comprehensive customer service to the construction industry.

## Pics and captions

*The Isokorb type A*



*Part of the Chester Balmore development*



Architects drawing of the development



Courtesy of Architype