

# Case study



01/05/2014

**For immediate release**

## **Schöck Isokorb for landmark Social Justice Centre**

A former factory building in Vauxhall, next to the Oval in south London, is being redeveloped as a new landmark Social Justice Centre. Known as The Foundry, the Centre will provide a highly accessible and energy efficient base for organisations working in social justice and human rights. The project, designed by London architects 00:/ for Ethical Property, involves extensive refurbishment of the existing building with the installation of new lifts and services throughout; and the construction of a new two-storey extension that will act as the public frontage of the building on Oval Way. The development has a welcoming highly transparent entrance space with a glazed front façade and public seating to attract passers-by. It is anticipated that the building will be home for up to 40 organisations, providing flexible office facilities, a conference hall, meeting rooms, a public cafeteria and exhibition space. A rooftop garden even features planters, intensive green roof spaces, picnic areas and beehives

The new build element of the works involves the extensive use of an exposed concrete structure and this will act as a heat sink for the building, which will achieve a BREEAM 'Very Good' rating. A feature of the design is a continuous external canopy structure at all three floor levels and the prevention of thermal bridging at the connectivity points was an important consideration. It is the Isokorb type K thermal break from Schöck that has been incorporated to solve the problem. Not only does it provide an efficient thermal break between the varied connection profile and the concrete structure, it also transfers bending moment, stress and shear forces and reduces thermal losses to a minimum by virtue of its innovative technology (HTE module compression bearings). In ad-

dition, plastic jackets on the concrete pressure bearings provide trouble-free movement and flush-mounted pressure bearings facilitate easy installation on site.

The extensive Schöck Isokorb range allows connections to be made between concrete-to-concrete, concrete-to-steel and steel-to-steel; with one of the modular connection types even allowing the retro-fitting of balconies in certain situations. The Isokorb range also provides BBA Certification, LABC Registration and it comfortably exceeds the requirements of BRE IP1/06 and Part L of the Building Regulations where the temperature factor used to indicate condensation risk ( $f_{RSI}$ ), must be greater than, or equal to, 0.50 for commercial buildings. A stipulation comfortably exceeded by incorporating the Schöck product into the design.

There is also compliance with the Government Standard Assessment Procedure, SAP 2009, concerning CO<sub>2</sub> emissions from buildings, and respectively heat losses through non-repeating thermal bridges. Here, the lambda values of the Schöck Isokorb enables energy loss through balconies, canopies and other cantilever parts of the building to be reduced by as much as 84% to 91%.

***For your free copy of the Schöck Specifiers Guide and / or the Technical Guide contact the company on 01865 290 890 or visit [www.schoeck.co.uk](http://www.schoeck.co.uk)***

- Ends -

<b>Client:</b>	<b>The Ethical Property Company</b>
<b>Architect:</b>	<b>00:/</b>
<b>Contractor:</b>	<b>Bennett Construction</b>

<b>Press Contact for Schöck Ltd:</b> Michael Revans Communications 47 Barn Rise, Wembley Park, HA9 9NH  tel: 020 8904 9733 e: <a href="mailto:michael.revans1@btinternet.com">michael.revans1@btinternet.com</a>
--

## Notes to the editor

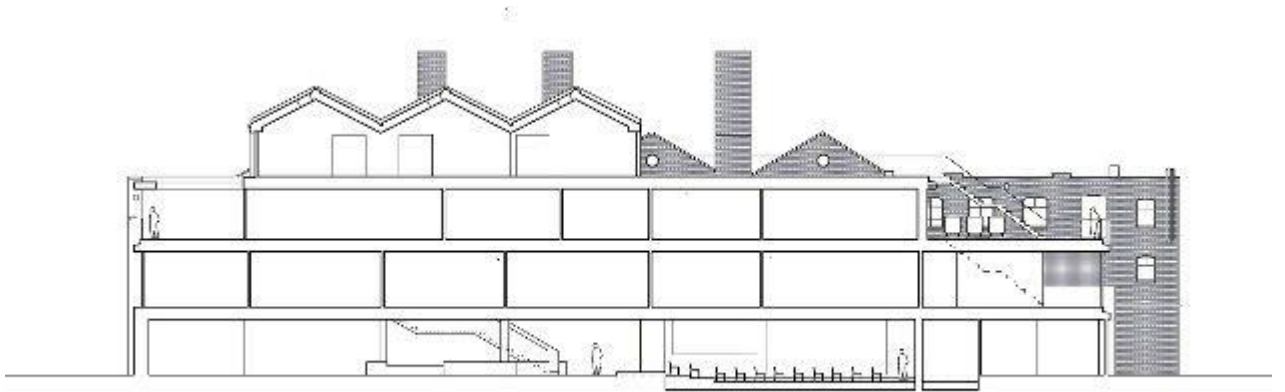
### A leading European supplier

Schöck has grown to become Europe's leading supplier of innovative structural load bearing insulation products. The main product is the Schöck Isokorb – a thermal break for various types of cantilever constructions in new buildings and for renovation. Its headquarters are at Baden-Baden in southern Germany and there are subsidiary companies in Great Britain, France, Austria, Switzerland, Italy the Netherlands, Belgium, Poland, Hungary, Russia, Japan, Canada and the USA. Sales teams and partners operate in many other European countries and also Australia and South Korea. Schöck is committed to providing the highest level of technical back up and comprehensive customer service to the construction industry.

## Pics and captions



The continuous external canopy structure.



---

Sectional view of the building front

*Images courtesy of Architects 00:/*