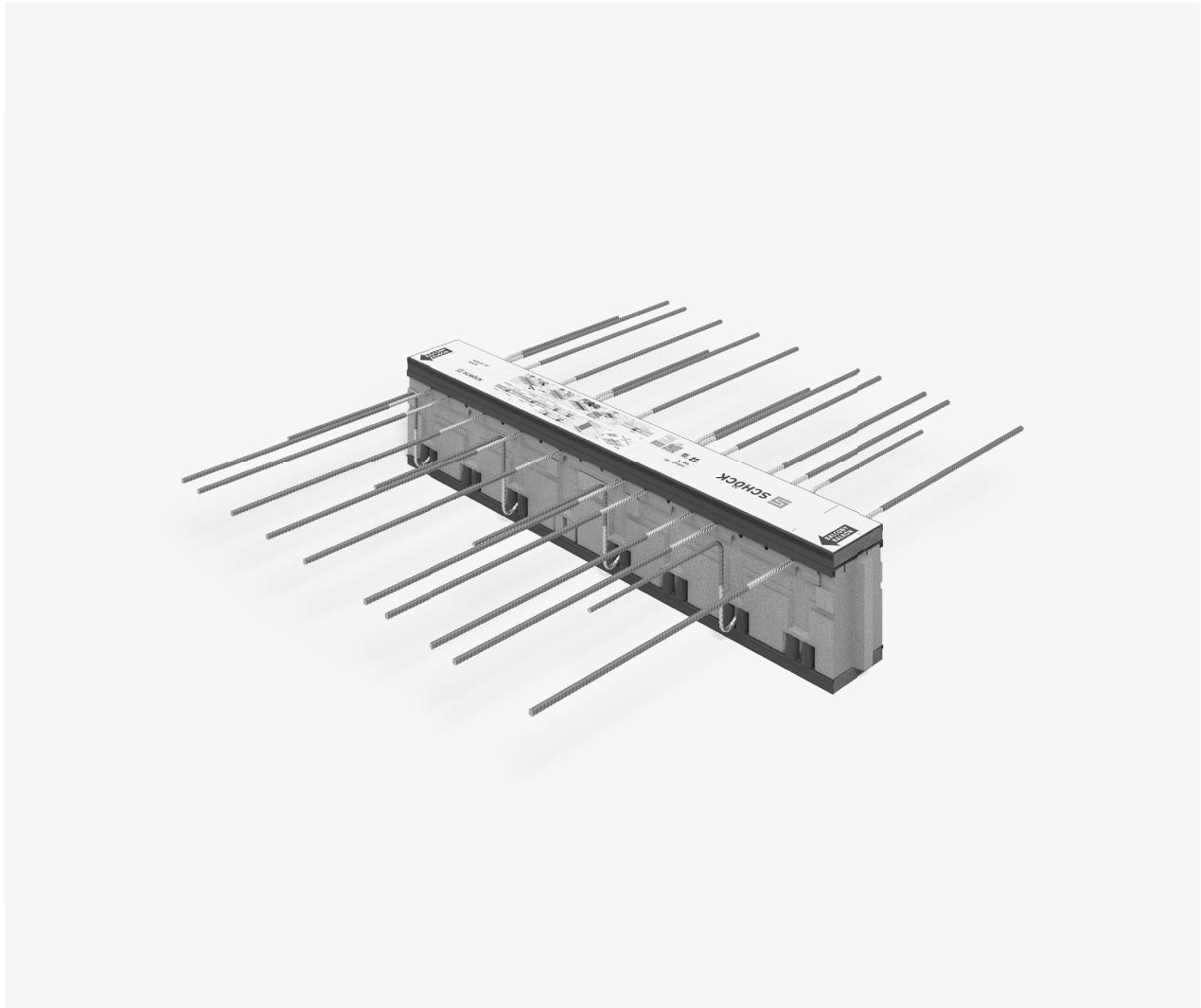


Schöck Isokorb® XT/T type K



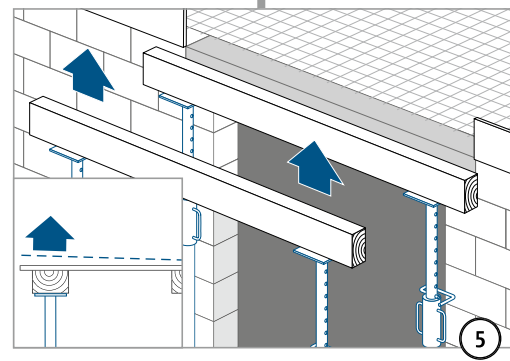
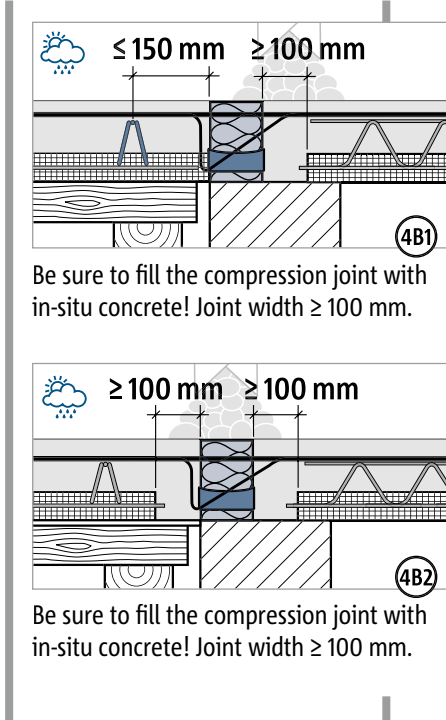
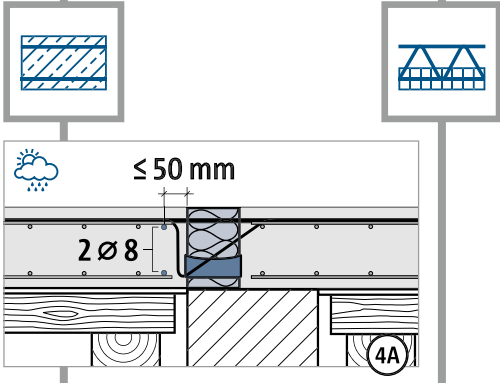
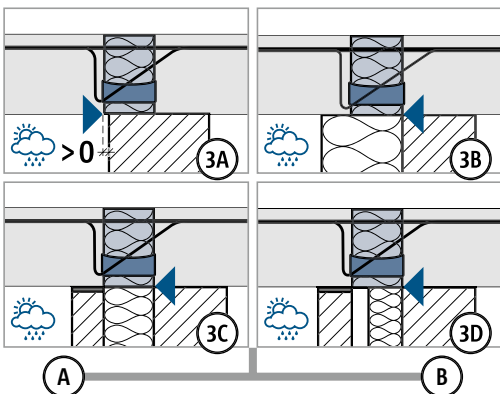
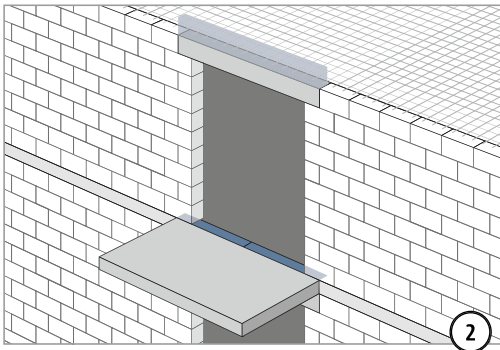
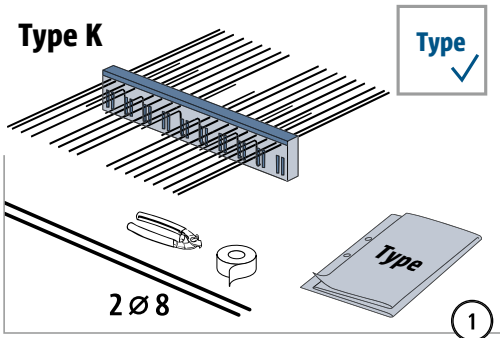
XT/T
type K

Reinforced concrete – reinforced
concrete

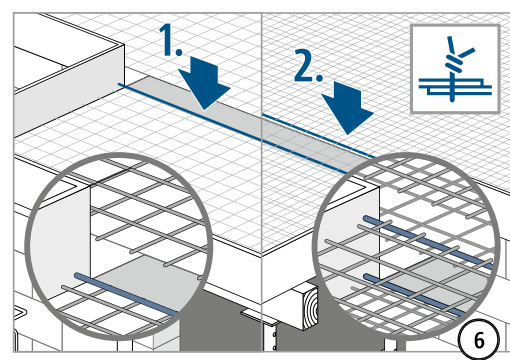
Installation instructions

XT/T
type K

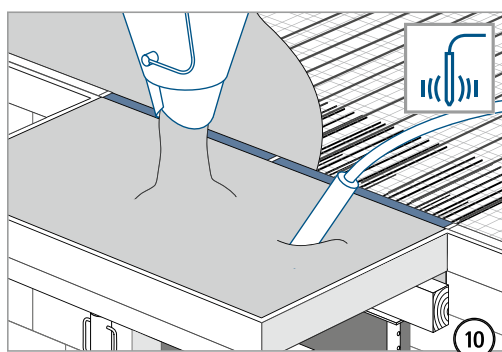
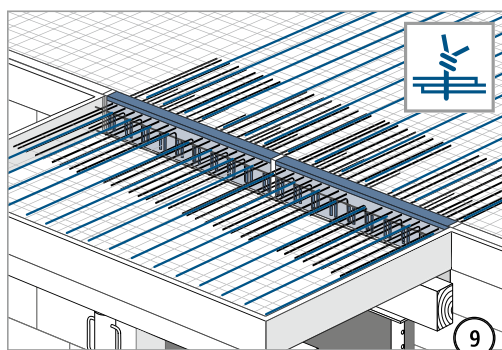
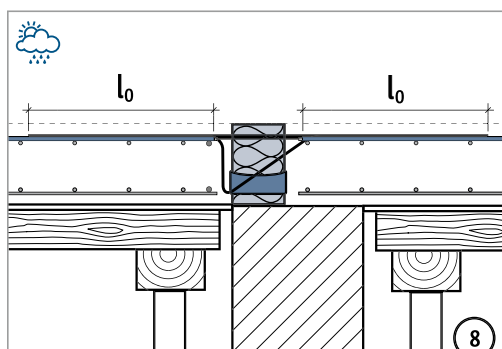
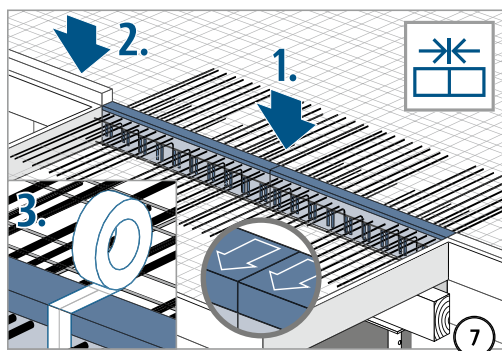
Reinforced concrete – reinforced
concrete



Step formwork in accordance with work plan.



Installation instructions



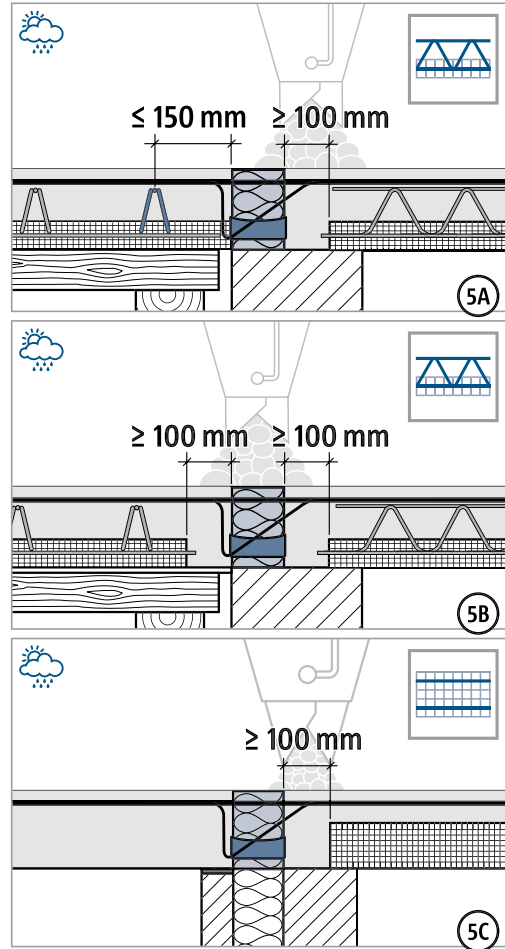
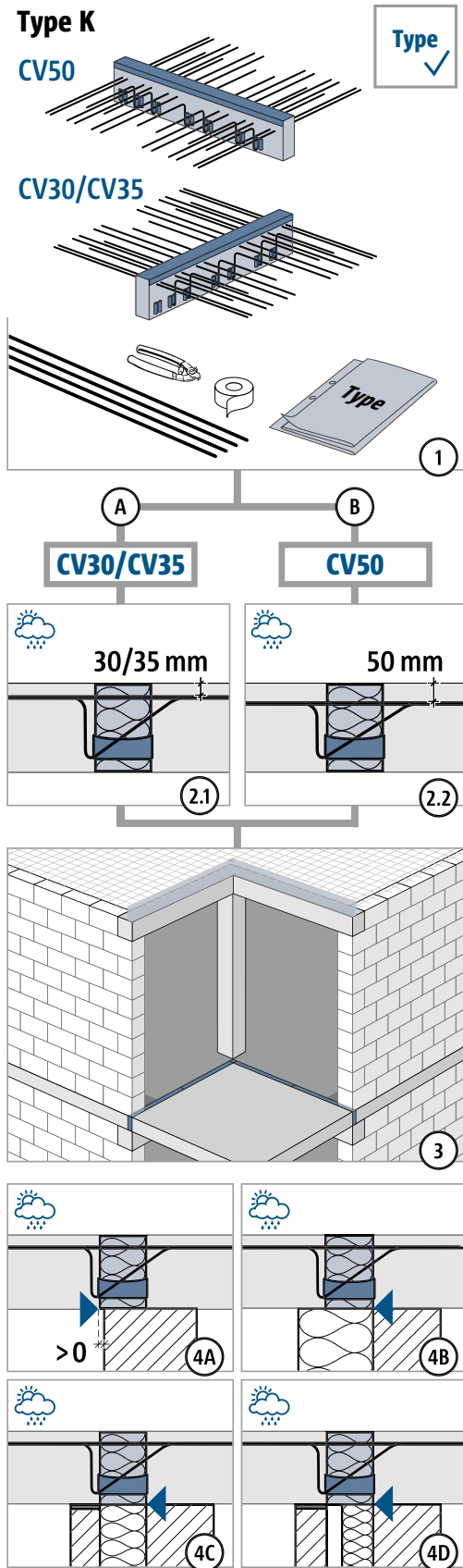
XT/T
type K

Reinforced concrete – reinforced
concrete

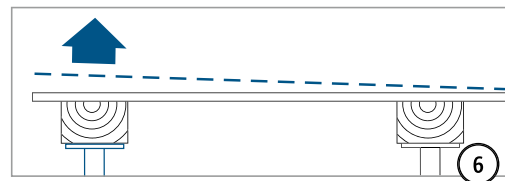
Installation instructions – connection across the corner

XT/T
type K

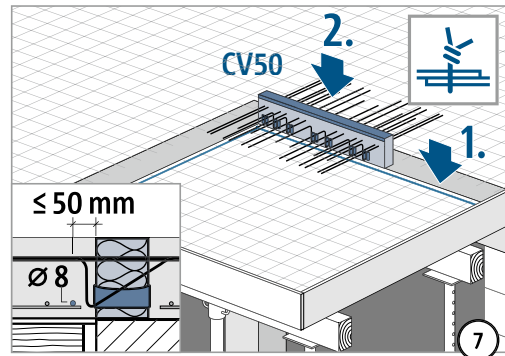
Reinforced concrete – reinforced
concrete



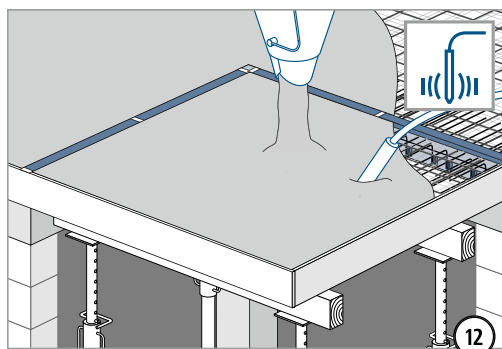
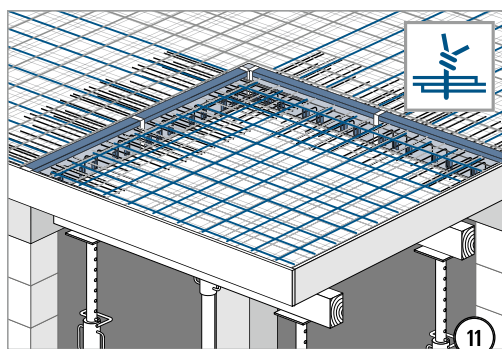
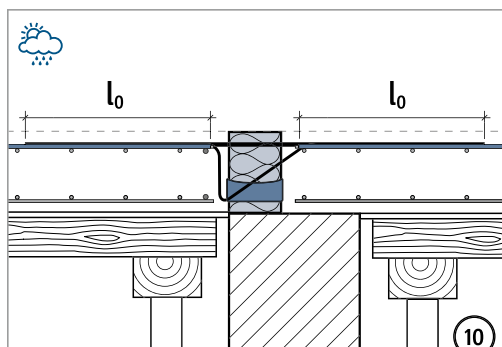
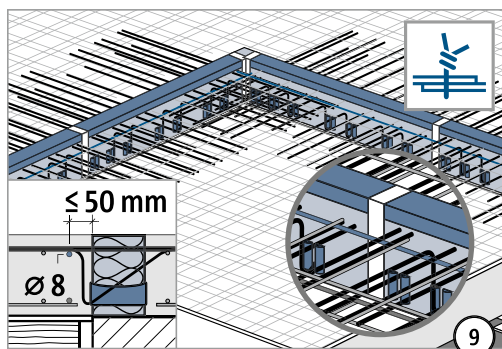
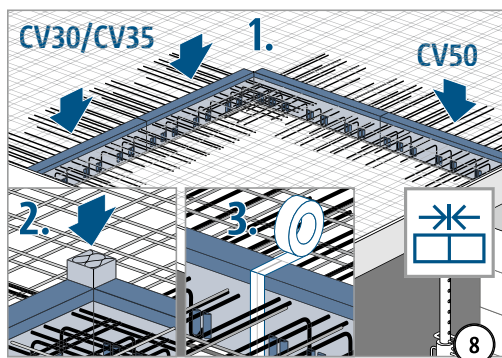
5A–5C: Be sure to fill the compression joint with in-situ concrete! Joint width $\geq 100 \text{ mm}$.



Step formwork in accordance with work plan.



Installation instructions – connection across the corner



XT/T
type K

Reinforced concrete – reinforced
concrete

