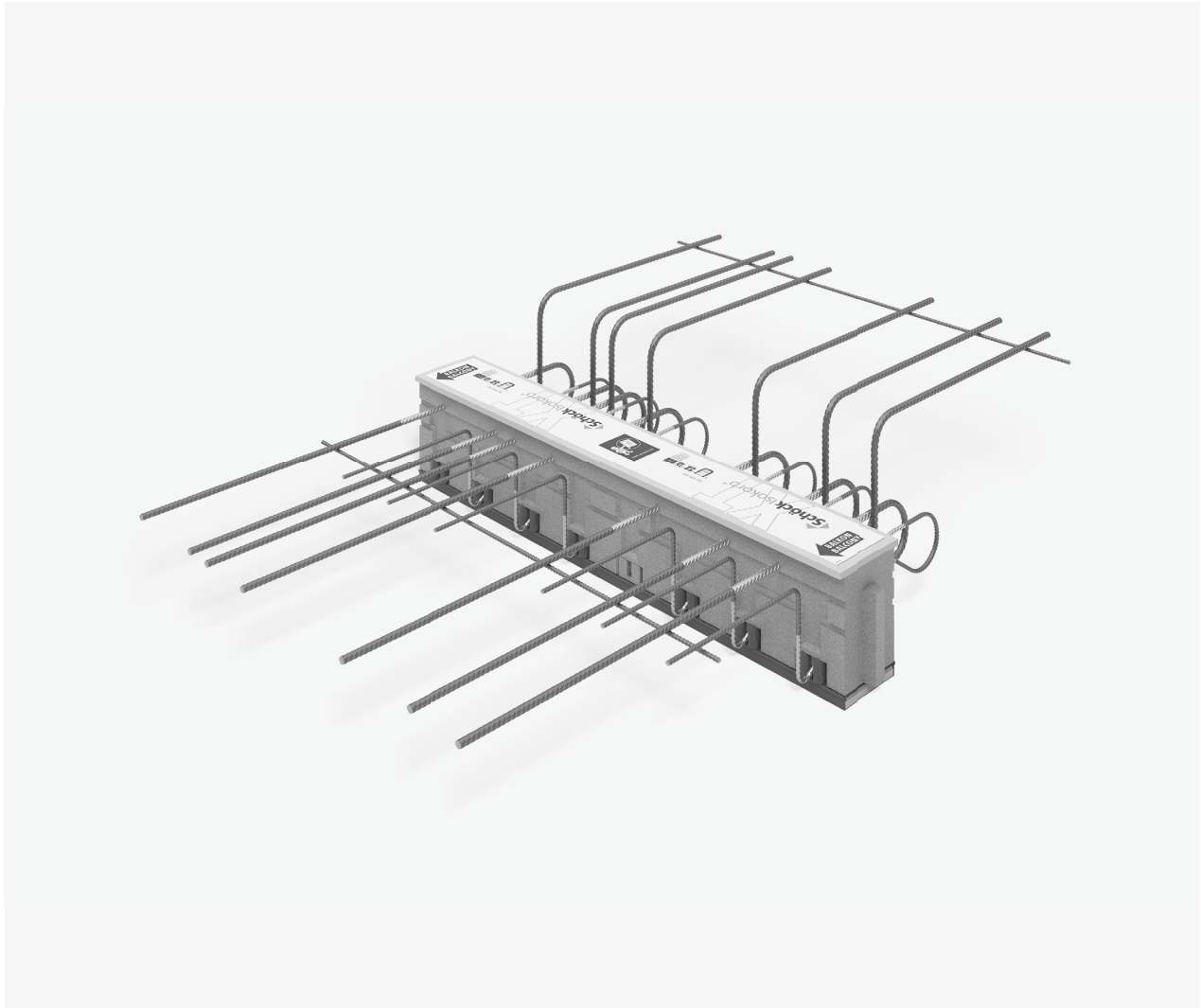


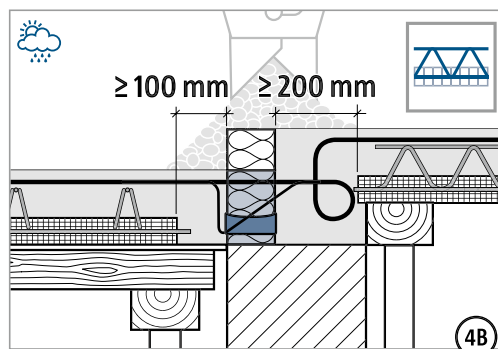
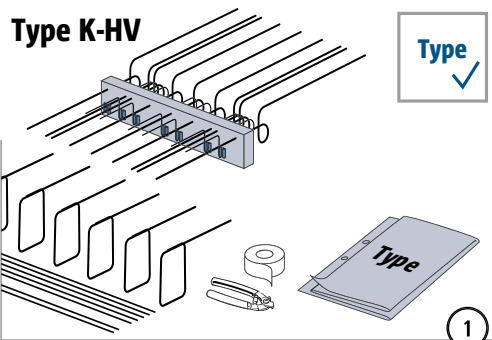
## Schöck Isokorb® XT/T type K-HV/BH/WO/WU



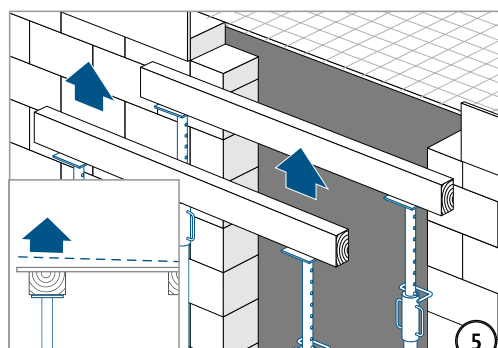
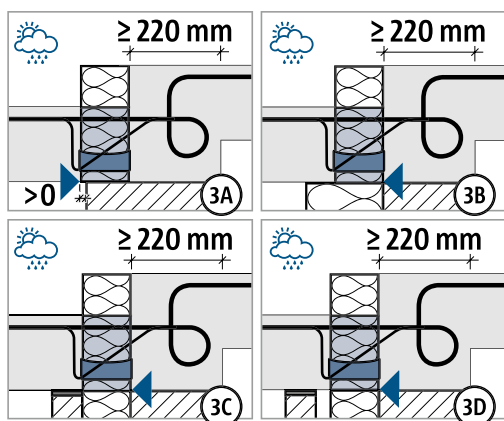
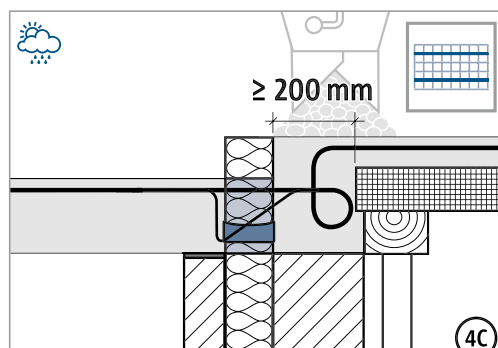
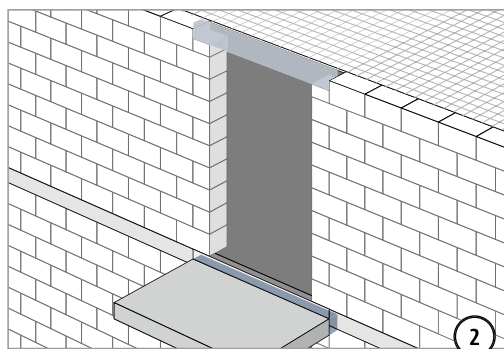
XT/T type  
K-HV, K-BH  
K-WO, K-WU

Reinforced concrete – reinforced  
concrete

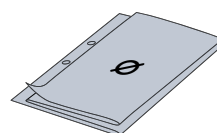
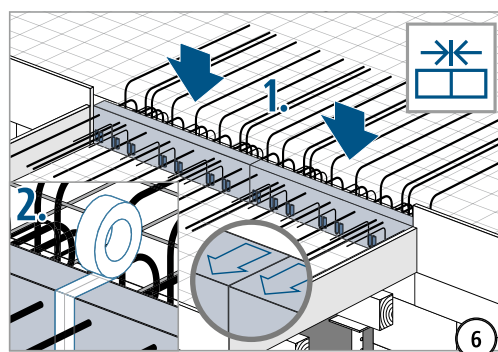
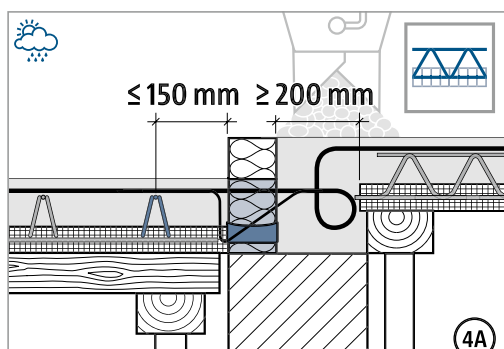
## Installation instructions



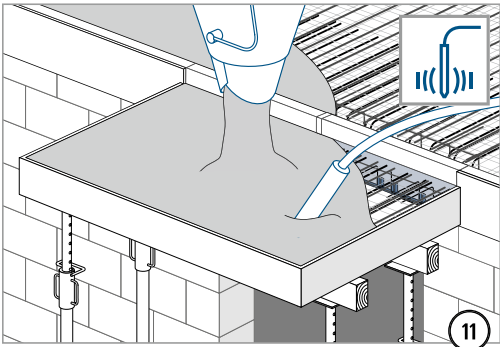
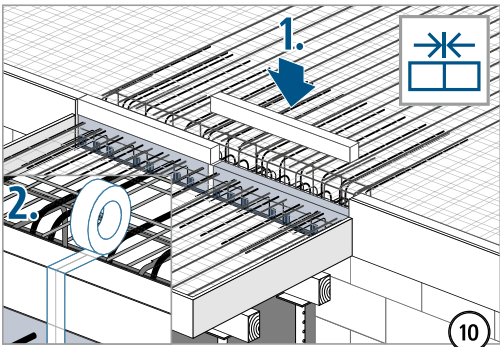
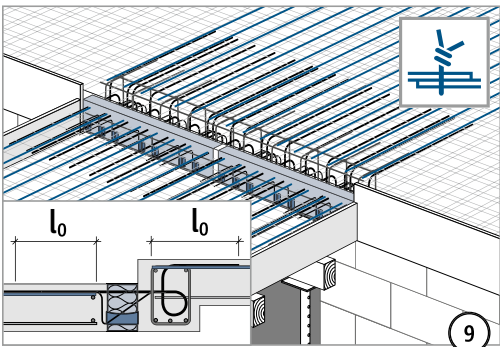
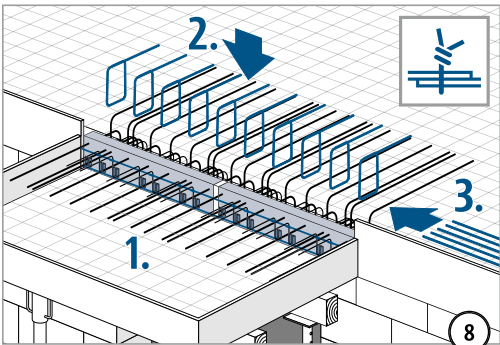
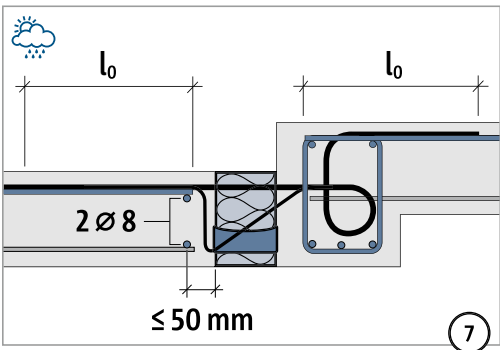
Be sure to fill the compression joint with in-situ concrete! Joint width  $\geq 100$  mm.



Step formwork in accordance with work plan.



Installation instructions

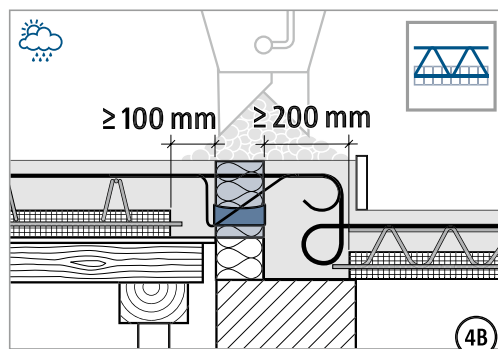
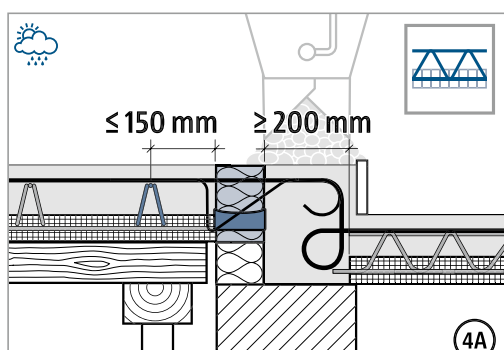
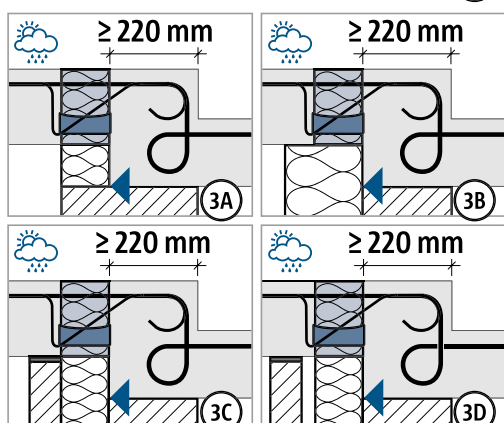
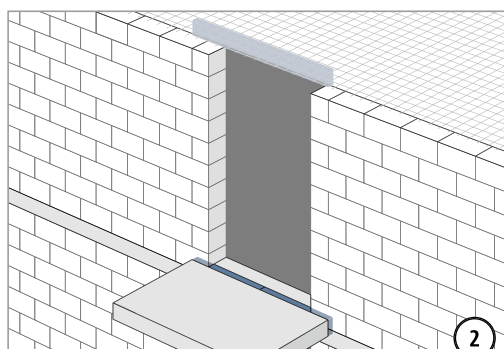
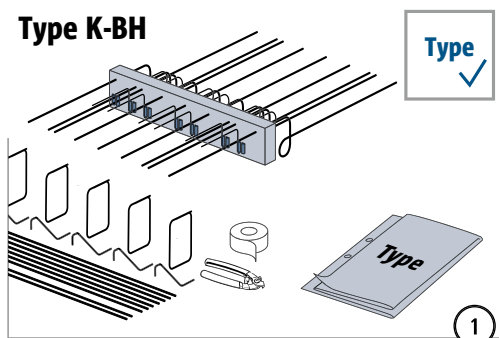


XT/T type  
K-HV, K-BH  
K-WO, K-WU

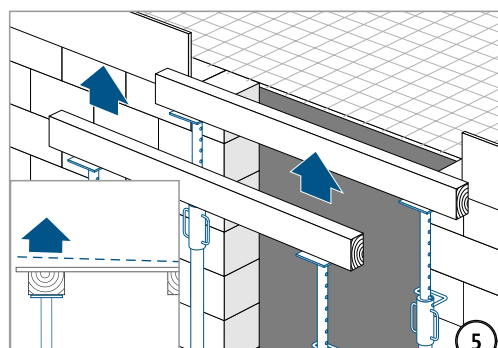
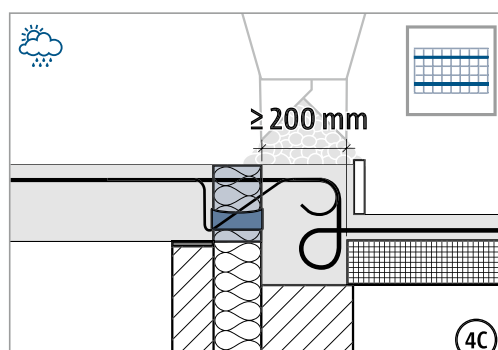
Reinforced concrete – reinforced  
concrete

## Installation instructions

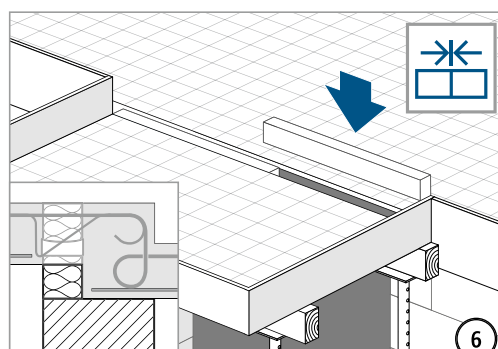
### Type K-BH



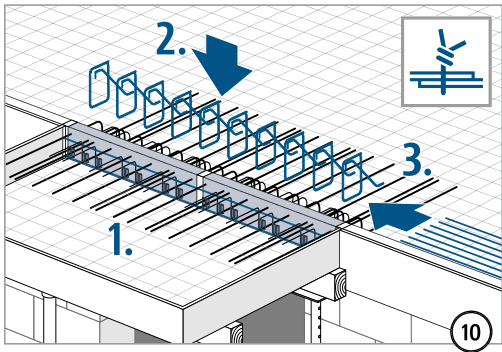
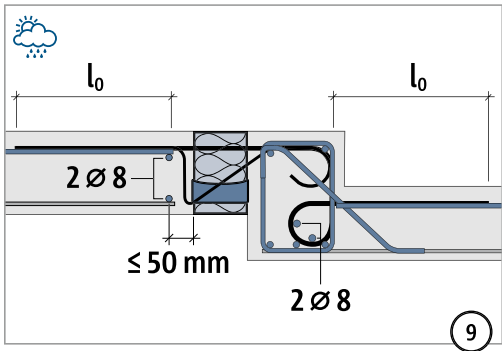
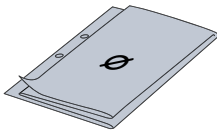
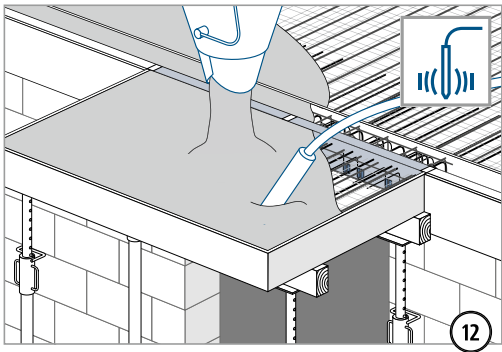
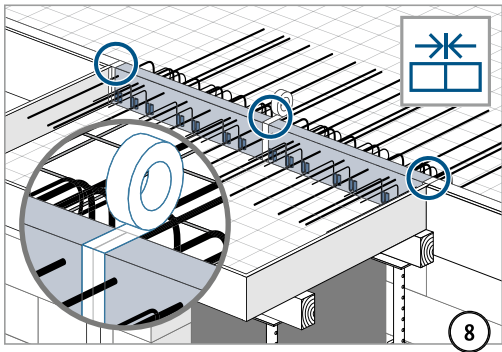
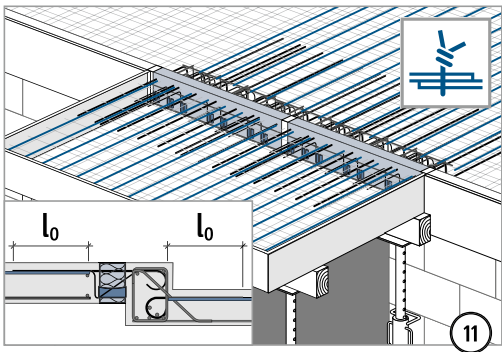
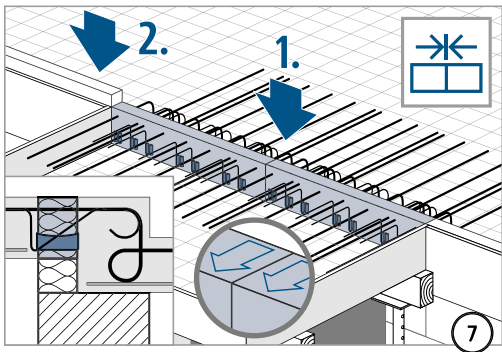
Be sure to fill the compression joint with in-situ concrete! Joint width  $\geq 100$  mm.



Step formwork in accordance with work plan.



Installation instructions



XT/T type  
K-HV, K-BH  
K-WO, K-WU

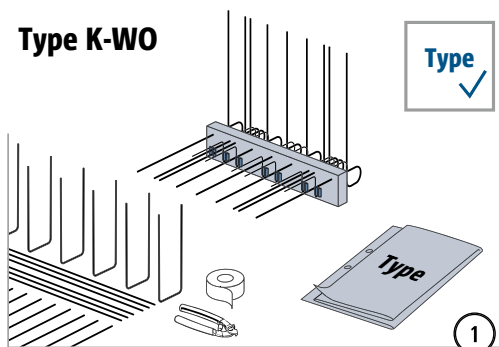
Reinforced concrete – reinforced  
concrete



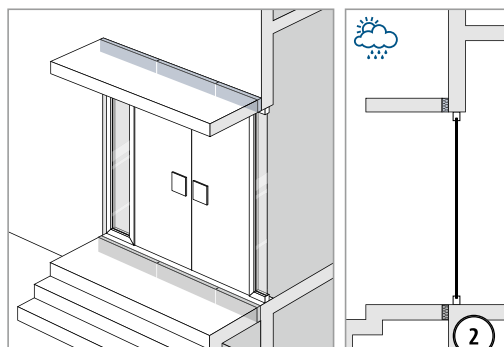
## Installation instructions

### Type K-WO

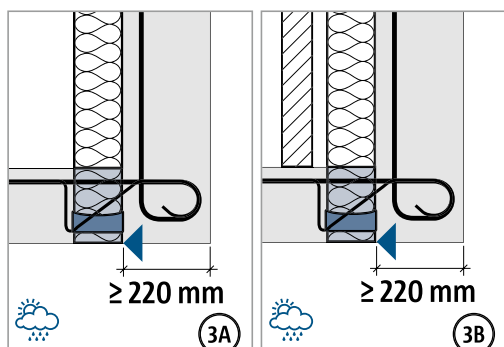
Type ✓



1

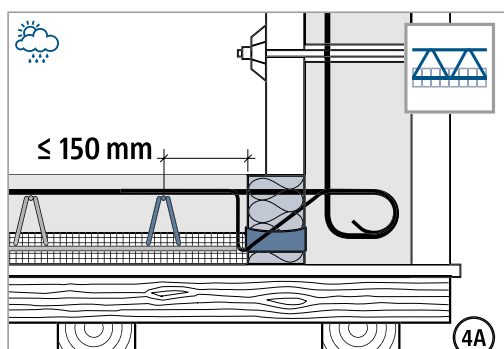


2

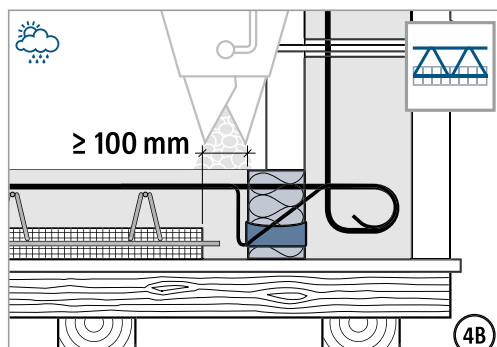


3A

3B

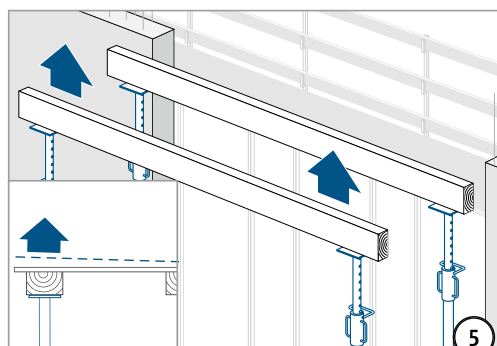


4A



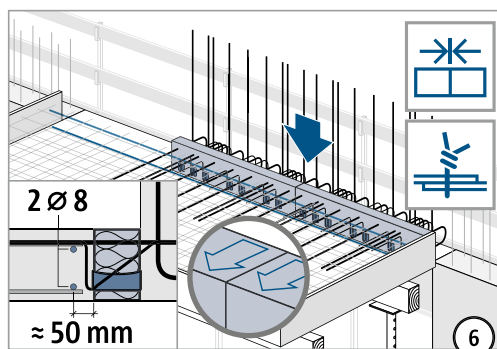
4B

Be sure to fill the compression joint with in-situ concrete! Joint width  $\geq 100$  mm.

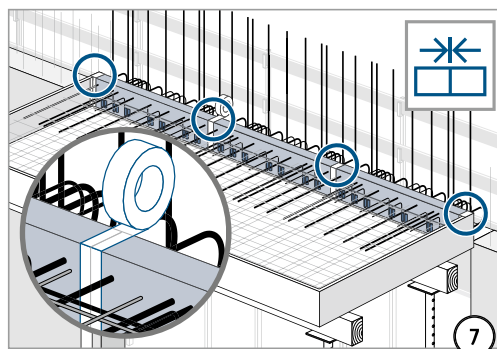


5

Step formwork in accordance with work plan.

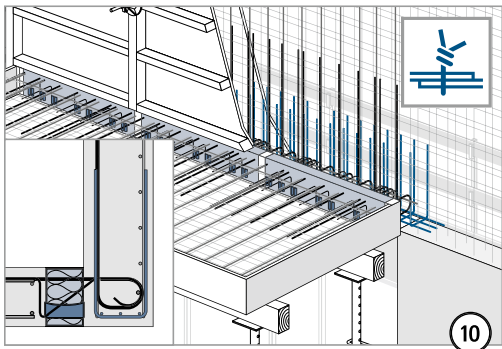
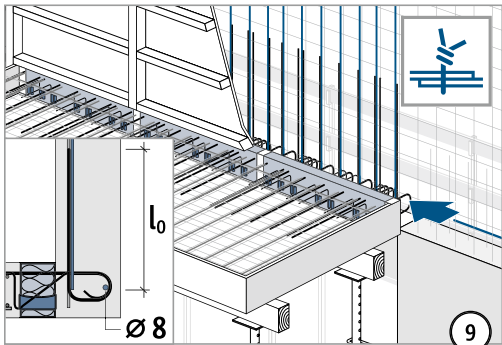
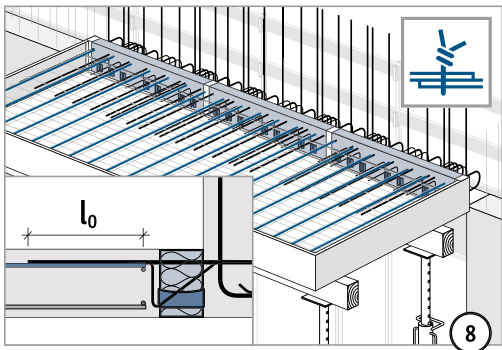


6



7

Installation instructions



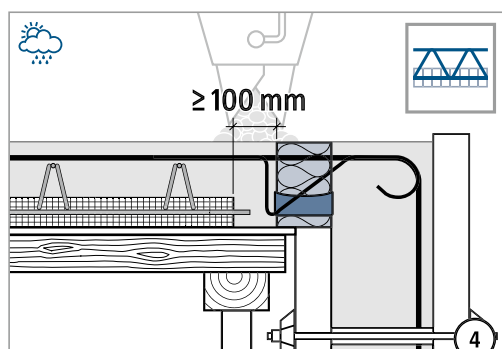
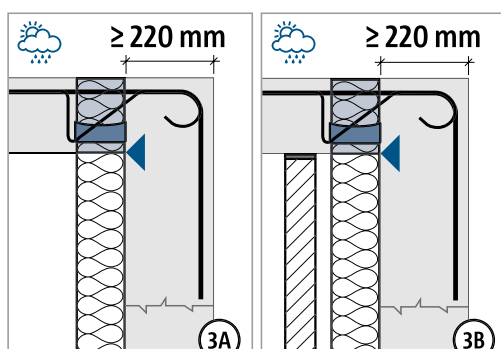
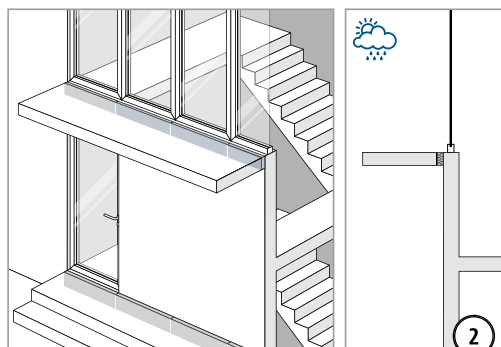
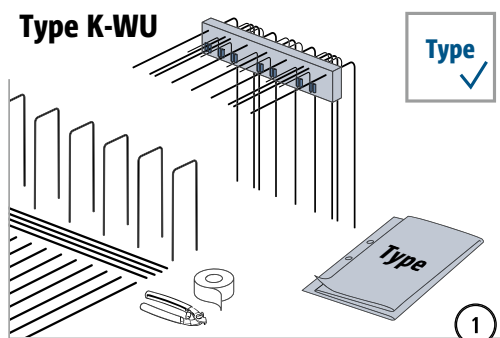
XT/T type  
K-HV, K-BH  
K-WO, K-WU

Reinforced concrete – reinforced  
concrete

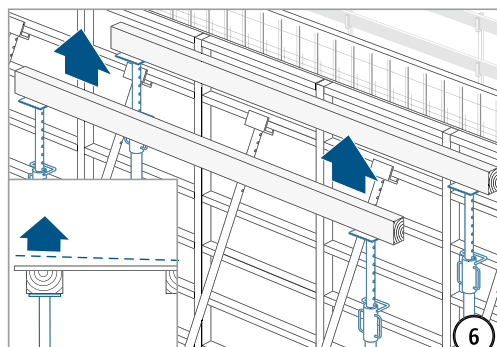
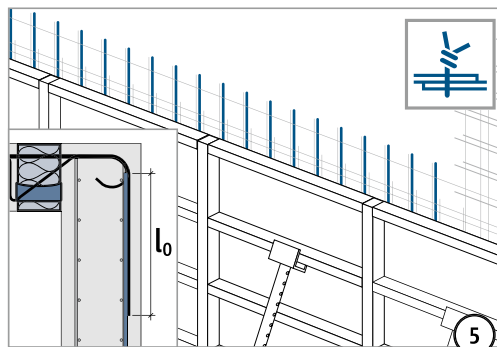
## Installation instructions

XT/T type  
K-HV, K-BH  
K-WO, K-WU

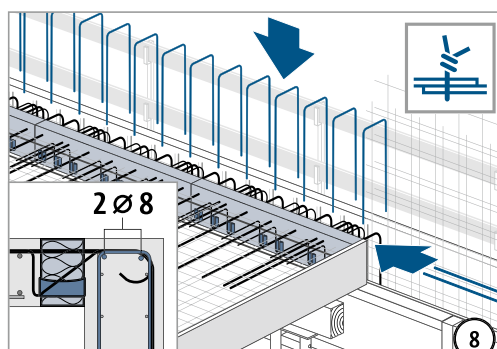
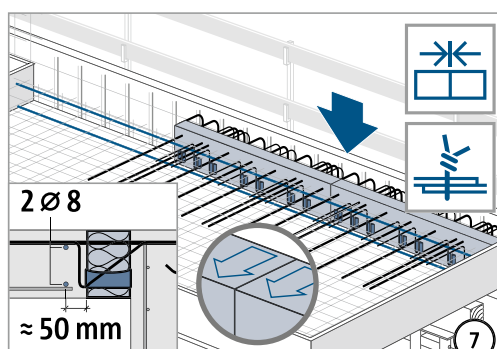
Reinforced concrete – reinforced  
concrete



Be sure to fill the compression joint with in-situ concrete! Joint width  $\geq 100$  mm.

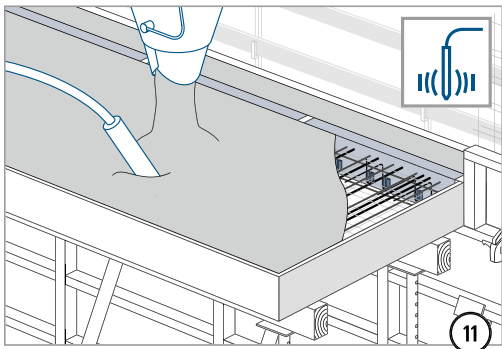
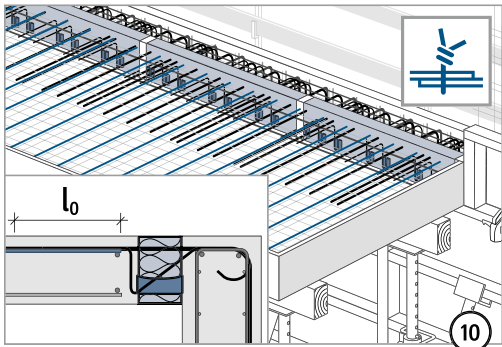
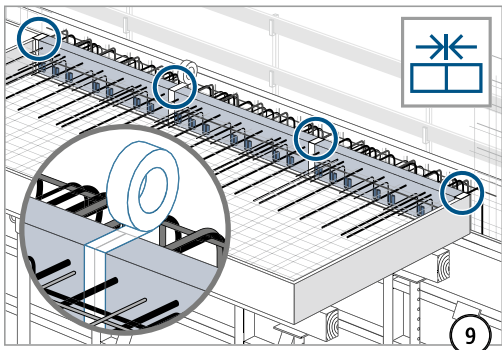


Step formwork in accordance with work plan.





Installation instructions



XT/T type  
K-HV, K-BH  
K-WO, K-WU

Reinforced concrete – reinforced  
concrete

